



Radiant Restorations



Volume 4, Issue 1

Spring Newsletter

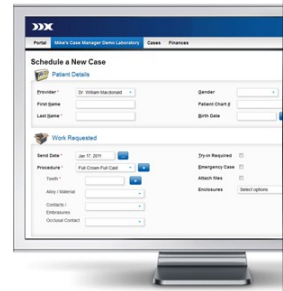
Has your office gone paperless?

Computer technology has transformed the way we communicate and complete our everyday tasks. Since the late 1960's, it has continually advanced the procedures we use and revolutionized the way dental practices operate. In a dental office, digital information can fall into one of three categories; practice management systems, dental imaging, and electronic dental records system (EDR). Attempts have been made by many software companies to integrate these different systems, creating an even greater level of efficiency for the doctor and staff.

If charting, images, and records are all digital, lab slips are likely to be next on the list. With the lab management system that we use at Renstrom, we have the capabilities to make digital lab slips possible for our digital doctors. It is called DDX. This online case management tool allows

your office to share information with us instantly. The DDX program is currently integrated into Dentrix and a few other practice management softwares. For those not using Dentrix, it is also web enabled so that staff can access information at any computer throughout the office. With DDX you will be able to send the digital RX's, files, images, and also access past invoices and statements. Essentially it will save time, improve production efficiency, and eliminate a lot of unnecessary phone calls to the lab. Converting things to digital can be very costly, but the other advantage with DDX is that it's offered to you free of charge. The system runs on an open network which means not only can it be a part of your practice management software but possibly other technologies you're working with as well. We understand that changes and advance-

ments in technology can be overwhelming. The purpose of this article is only to inform and create awareness of this digital possibility. Whether or not it is of any interest to you and your staff www.ddxdental.com is up to you. We will be sure to keep our doctors informed with DDX updates and any changes with the system. There are different federal codes/laws that may apply to the electronic records concept, which we will continue to monitor as it slowly progresses. If this is something you think you might like to incorporate at your office, or have any other questions about DDX and how you can benefit, feel free to give us a call.



Inside this issue:

Has your office gone paperless? 1

Chicago Midwinter 1

Diagnostic Wax-Ups 2

Ask the Model Department 3

Spring into CE 3

Calendar of Events 4

Chicago Midwinter Highlights

A large group from Renstrom attended the Chicago midwinter meeting this year. Some of the highlights of the trip included; Spectrum Techno-Clinical Day, The World Speaks e.max in Chicago, 3-Shape Tips and Techniques, and a few other Lab Day exhibits. Many of the Spectrum courses emphasized the importance of communication between all members of the dental team. Almost every case presentation began with the use of a diagnostic wax up, which is a great communication tool and can be used for

many purposes. Technology was another key topic as more processes are now performed digitally. Future predictions consisted of the growing number of open CAD/CAM systems versus closed and integration with different software programs. We can expect to see a decrease in the price of chairside oral scanners, and there's a possibility that the scan fees will be eliminated as well. It seems as though this fee has been a major drawback in the purchasing decision of the chairside systems. We can also expect to see ad-

vancements with removables and implant overdentures. The technicians each absorbed different pearls, everything from fabricating an e.max abutment to layering tips for the new e.max opal ingots. The group that attended had a great time. It was a pleasure to be able to learn from some of the best technicians from around the world. As told by master ceramist Pinhas Adar, "Surround yourself by individuals whom you inspire to be like."

Improving Quality With Diagnostic Wax-ups

Jeffrey L. Benson D.D.S.—Renstrom Technical Consultant

As restorative dentists, we are constantly working on ways to improve the quality, predictability and efficiency of our crown and bridge treatment. Renstrom Dental Studio is also constantly striving to improve the quality of the restorations that we provide. New digital technologies and exciting new all-ceramic materials like e.max are enabling us to produce restorations with remarkable fit and esthetics. To get the most out of these new technologies (and traditional ones as well) we need to work closely with the restoring dentist to ensure ideal fit, function and esthetics. This planning begins at the diagnostic appointment with the creation of quality study models. Using your detailed treatment plan and pre-op photos, our skilled technicians can then modify the study models by selectively removing plaster and/or adding wax to create a **diagnostic wax-up** (fig. 1) which becomes the blueprint for the final restorations. There are tremendous advantages to pre-planning your restorations with diagnostic wax-ups.

The diagnostic wax-up is helpful in determining if the proposed treatment plan is actually possible to achieve. Unusual tooth position, rotation or spacing often interfere with ideal esthetics and occasionally alter the entire restorative plan. It's best to discover this before the bur touches the tooth!

A diagnostic wax-up is also an excellent case presentation tool. Experience shows that treatment acceptance increases dramatically when patients can compare the pre-treatment study model with the diagnostic wax-up. It is the best communication tool available to promote cosmetic dental treatment.

An often overlooked advantage of the diagnostic wax-up is that a silicone putty matrix can be made on the wax-up which serves as a tooth reduction guide when the teeth are prepared. Since the matrix represents the desired final contour of the restoration, you simply prepare the tooth until there is 1.5 mm space between the matrix and the prepared tooth surface (fig. 2). This is especially helpful in achieving proper reduction when the teeth to be prepared are rotated or tipped.

The diagnostic wax-up can also dramatically reduce the amount of chairtime needed to make excellent temporaries that closely duplicate the shape and position of the desired final restorations. Making the temporary matrix on the diagnostic wax-up, rather than in the mouth, allows the dentist and the patient to preview the final result in the temporary. For larger cases the patient can actually try out the new shape and occlusion for a week or two, giving you the opportunity to finalize the design before the lab begins the final restorations. When the patient is comfortable with the occlusion and satisfied with the appearance, an alginate impression of the temporaries in place is all the lab needs to duplicate the approved temporaries in the final restorations. This strategy will reduce your adjustments and remakes and dramatically increase patient satisfaction

If you have any questions about diagnostic wax-ups, or how to use them to increase quality, reduce stress and increase the efficiency of your restorative treatment, please give us a call.



**Figure 1– Diagnostic Wax -up
(with gingival option)**



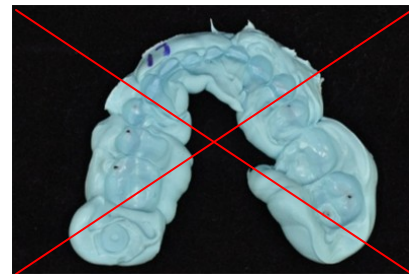
Figure 2- Reduction Guide

Just Ask the Model Department....

Renstrom team members Mark and Annie make up the model department at the lab. They recognize that their role is not only the first step in the fabrication process, but is also the most important. After looking at many impressions and mounting numerous cases, they'd both tell you that dual arch impression trays may not *always* accurately replicate a patient's bite. Often times this is the reason doctors send a bite registration with their routine crown prep cases. A good bite registration is highly critical for a successful restoration. There are several different material options, some more stable than others. A number of materials create an extremely thin and flexible registration which can end up tearing or breaking during handling. It is best to use a rigid material and follow the instructed technique when working with it. Mark and Annie have both indicated that the Vinyl Polysiloxane

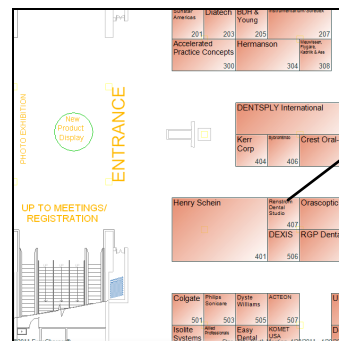
material has displayed accurate results in the lab. The photos on the right demonstrate a bite registration for a single crown prep using the VPS material. In some situations a larger bite registration is necessary to have, but for many cases only a small amount of material is required to capture an accurate bite. **The only information needed by the lab is the registration of the occlusal surface of the prep and the contact points with the adjacent teeth.** Mark and Annie trim away all of the unnecessary excess material and keep only the small button for verifying the correct occlusion. The average price for a box with two cartridges of the Vinyl Polysiloxane material is about \$30.50. This can get quite costly over time, especially if using a large amount for these routine cases. You can see in the photos below

what is actually used of the bite registration. Now that you know what is needed at the lab, you can save yourself the time and a few dollars by using only a minimal amount of material.



Spring into some Continuing Education!

If you're in need of some additional CE credits or are interested in some great courses, you're in luck! There are some exciting events happening this spring. For starters, the annual Star of the North Meeting is right around the corner. Just so you know, our booth location has changed this year. You'll find us at booth #407, which is very close to the entrance and right next to Henry Schein. Be sure to stop by and say hi! As for our classes here at the lab, Dr. Jeff Benson is giving a course on being successful with your restorative crown and bridge-work by looking to your laboratory. He will go over some simple techniques that can really make a difference in the quality you deliver to your patients. We also have Dr. Tom Dresen of Woodbury coming in to talk about implant supported overdentures. He will focus on presenting this type of treatment to your patients and the CAD/CAM capabilities we have at the lab. Coming up in May, Kennedy Hawxhurst CDT, will be here to do a hands on workshop with our chairside doctors and staff on staining and glazing their in-office crowns. All three courses held here at the lab are offered at either a minimal or no fee. If you are interested in one of the courses and for some reason can not attend, please let us know and we will do our best to make other arrangements with you. For dates and times, refer to the back page of the newsletter.



Renstrom
Dental
Studio
407

Follow us on Facebook!

Check out case photos, lab events, and industry updates!



Our goal is to get you patient referrals with every case we do!



**4225 White Bear Parkway, Suite 1240
Vadnais Heights, MN 55110**

Phone: 651-407-0491
Fax: 651-407-8712
E-mail: jenna@renstrom.com

**We're on the Web!
www.renstrom.com**

Calendar of Events

Edentulous Solutions: Precision Milled Bars

Thursday, April 7th

Presenter: Thomas M. Dresen, DDS

Location: Renstrom Dental Studio

Five Keys to Success in Crown and Bridge Restorative Dentistry

Tuesday, April 19th

Presenter: Jeffrey L. Benson, DDS

Location: Renstrom Dental Studio

Star of the North Dental Meeting

April 28th-30th

Booth # 407

Location: Saint Paul River Centre

Chairside Staining & Glazing: Tips and Techniques

Friday, May 6th

Presenter: Kennedy Hawxhurst, CDT

Location: Renstrom Dental Studio

