

# Radiant Restorations

## Case Study: Implant Bar Overdenture

Dental implants seem to be the one sector in dentistry that is on the rise. The reason may be partly due to the baby boomer generation, consumer awareness, or advanced technologies and products. Implant manufacturers are investing many dollars into marketing, education, and materials. Because of the different implant treatment options now being accepted by patients, laboratories are doing more complex implant cases, requiring the use of new materials and technologies.

The newest system at Renstrom is the NobelProcera Scanner. With 3D software, a technician has the capability of designing a variety of things, one being titanium implant bar overdentures and hybrid bars with the desired attachments. Depending on the patient's treatment plan and budget constraints, a fixed or removable bar can be fabricated to fit their needs. In the case shown below, five implants were placed and a Montreal Bar was made to retain the overdenture. The bars can be made for a variety of implant systems and multi unit abutments. The highly polished, biocompatible bars are light but high in strength, which reduces the likelihood of extension breakage. A big advantage to a titanium bar is that it is an affordable option in comparison to cast metal solutions. Patients can also enjoy a stable, yet removable denture for easy hygiene maintenance. The technicians at Renstrom would be happy to assist you with the treatment planning of your next simple or complex implant case!

### Inside this issue:

Case Study: Implant Bar Overdenture	1
Renstrom Receives National Recognition	2
Upcoming Course—Christensen Dental Consulting	2
Highlights of 2011	3



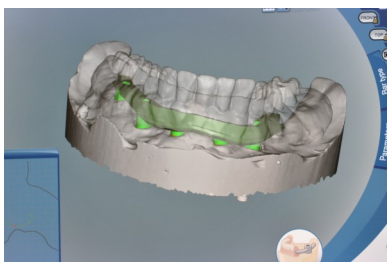
1) Models were poured from the implant level impression that was sent to the lab. It is important that the lab technician has all of the information with the case including type and size of implants.



2) In this case, the patient had a pre existing denture, which was sent to the lab and duplicated. If the patient does not have a denture, a set-up will be fabricated and evaluated at try in.



3) A verification jig was made using GC resin and non-engaging implant replicas to verify the placement of the implants in the model. The doctor will then do a try in to confirm that when seated completely, the jig does not lift and has a passive fit. If one of the implant replicas does not completely seat, the doctor can section the jig and relute it until a passive fit is obtained.



4) The model and denture replica were scanned using the NobelProcera scanner. Different design tools were used to virtually create the implant bar. A Montreal bar was designed for this case. The file is then sent from the software to the NobelProcera Production facility for milling.



5) The bar is milled out of surgical grade 6A1-4V titanium, which is four times lighter than gold. It is returned to the lab highly polished with all screws/attachments and ready to be delivered for try in.



6) The Denture teeth are reset on the titanium framework, and both bar and set up are tried in once again.



7) Once the denture is approved, the overdenture is processed and finished.

## Renstrom Receives National Recognition

Renstrom was thrilled when asked by Lab Management Today to be included in an article and then that same month be featured in a web exclusive for dentalproductsreport.com. The web exclusive can be found under the lab column next to the legacy lab heading. It was quite an honor to be recognized for being one of the family owned and operated labs still around today. In the article, Rick and Randy

talk about Renstrom's history and their commitment to high quality and customer service over the years.

The article in LMT is titled "Nine ways to 'Wow' your clients with education". Included in these nine ways is to have a dentist on staff at the lab. We do a variety of things at Renstrom to provide education for clients, one of those being having Dr. Benson available to trouble shoot and offer

technical support to dentists and their staff. The paragraph below is the section from LMT on having an on-staff dentist and includes Renstrom and Dr. Benson's role at the lab.



**"Reprinted with permission from LMT, Sept/Oct 2011; [www.LMTmag.com](http://www.LMTmag.com)"**

### (7) An On-Staff Dentist

When Dr. Jeff Benson--a long-time client of Renstrom Dental Studio--was retiring but interested in staying active in dentistry, Randy Renstrom, CDT, saw an opportunity. "We had been looking at new ways to get information to our clients and having Dr. Benson come on board was a perfect fit," says Renstrom, owner of the Vadnais Heights, MN laboratory. "With all of today's changes in materials and processes, he can help dentists decipher the information coming at them from so many different sources; it helps us help them practice better dentistry."

Working two days a week, Dr. Benson spends the majority of his time on client education, such as troubleshooting or researching and discussing new materials and technology. He also holds monthly courses at the laboratory on topics like impression-taking, photography, temporization and shade communication. In addition to inviting current dentist-customers and their staffs, as well as other area dentists, the laboratory opens the courses up to students from nearby University of Minnesota Dental School. "It's an invaluable opportunity for us to expose dental students to topics and techniques they don't learn in school and gets them thinking about the laboratory's perspective before they even start practicing," says Renstrom. "Dr. Benson also provides long-term mentoring to some of our clients who are new dentists."

To read the full article on "Nine ways to 'Wow' your clients with education" go to [www.lmtmag.com](http://www.lmtmag.com)

### Christensen Dental Consulting- Upcoming Course

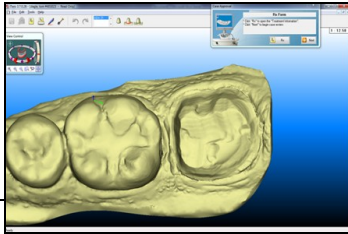
The Northern Dental Alliance, which Renstrom is a part of, recently welcomed new member Gayle Christensen of Christensen Dental Consulting to the group. Like the other members of the NDA, Gayle is an independent dental consultant working in the best interest of her dentist clients. Her services consist of consulting, employment law compliance, and integrated performance management. Gayle has dedicated her professional career to developing and implementing effective dental management systems that bring clarity, accountability, increased profits, and patient satisfaction to dental practices across the Midwest. She believes the team is the heart of the practice, and customer service is the best marketing tool.



We are looking forward to having Gale at the lab in 2012 to give a presentation on some of the above topics. More info, including the date, will be announced in the New Year. We encourage office managers, dentists, and clinical staff to attend. The program will cover strategies specific to each role in the office. You can find more information about Gale's services by visiting her website at [www.gaylechristensen.com](http://www.gaylechristensen.com).

# Renstrom Highlights of 2011

Renstrom had a large group attend the Midwinter meeting in Chicago this year. The weekend consisted of lectures given by world-renowned technicians at Spectrum Day and then a day of exhibits at lab day. As always, there were many great things to see and learn!



Dr. Benson and one of Renstrom's clients conducted a study on the Cadent Itero Digital Impressioning System. With so many systems available, determining the best one may be challenging. Let us know if you'd like to know more about the study and the results!

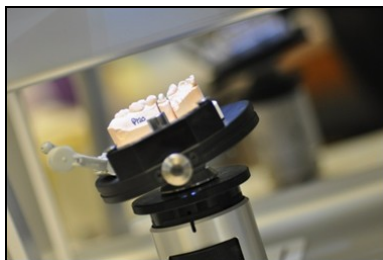
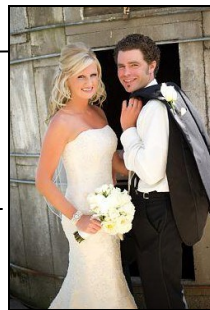


Annie, our Model Room Technician, is a new proud mom of a handsome little boy. She welcomed Jameson John into the world on July 28th.



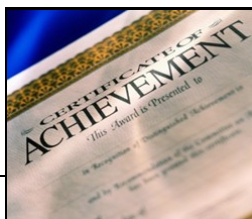
It was decided to continue the tradition of a Backyard BBQ at Renstrom. This would mark our second annual which made for an even better turnout than the first one. We all enjoyed seeing many of our doctors and their staff.

This summer/fall meant wedding bells for Jenna and Kristina. Jenna, our lab representative of almost four years was married in August. Kristina, who has been a ceramist at Renstrom for ten years, was married this October. Congratulations!



Another system now in the digital technology center is the Nobel Procera Scanner from Nobel Biocare. With this optical scanner, we have the ability to design copings, full contour crowns, abutments, and now implant overdenture bars.

Renstrom was recognized in two lab publications this fall. LMT (Lab Management Today) included Dr. Benson in an article that discussed the benefits of having an on staff dentist at the lab. Rick and Randy were also interviewed by dental lab products for their web exclusive on Legacy Labs.



The lab had two interns this year. Dave and Janna were each with us for about a month. It was fun to have aspiring dentists be involved with the entire lab fabrication process. They both expressed that it was a valuable learning experience.

Because of our commitment to creating beautiful smiles, Renstrom Dental Studio became a member of the Minnesota Academy of Cosmetic Dentistry. We are excited to be a part of the study groups and CE events to expand our knowledge in all areas of cosmetic dentistry.





4225 WHITE BEAR PARKWAY, SUITE 1240  
VADNAIS HEIGHTS, MN 55110

Phone: 651-407-0491  
Fax: 651-407-8712  
E-mail: [jenna@renstrom.com](mailto:jenna@renstrom.com)

*Our goal is to get you patient  
referrals with every case we do!*

[www.renstrom.com](http://www.renstrom.com)



*The Renstrom team wishes you Happy  
Holidays and a New Year  
filled with prosperity and success!*

